



AUM VISION

Company Profile 2021

AUM VISION PRIVATE LIMITED 207824962D

Ref. no.: 201824962D AUM Project reference



AUM VISION

AUM TITANIUM COATINGS



AUM
TITANIUM
COATING

[Arts Creation]



COATING SERVICES

AUM COATINGS BACKGROUND

AUM Vision is able to coat most surfaces and this will enhance the design with the choice of colour with an artistic feel or to cover any impurities that increases the value of the product in question.

With a team of professionals that has vast experiences in design and coating, we are able to transform a surface into a work of art.

Aum Vision strives to promote a sense of belonging and harmony when a person or community is within the confines of our creation!

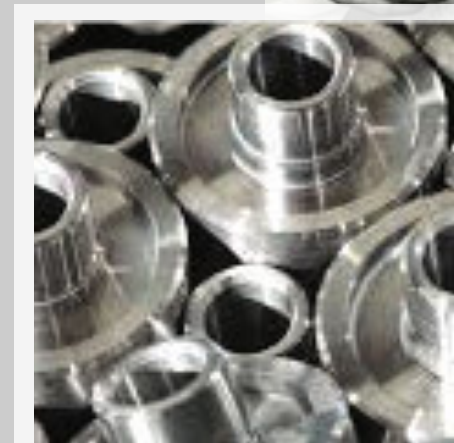
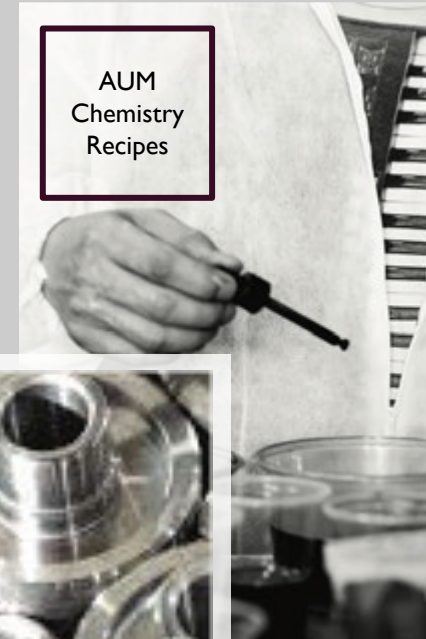
Singapore Branch
AUM VISION PTE LTD
38 Sungei Kadut St 2
Unit 02-A2
S(729245)

Malaysia Branch
AUM VISION SDN BHD
No. 35, Jalan Metro Perdana Barat 2,
Taman Usahawan Kepong Utara,
Kepong 52100, Kuala Lumpur, Malaysia

e: ask@aumvision.com



TITANIUM
COATING
Bake at the
High Temperature.



Degrease & Preparation





COATING SERVICES

TRADITIONAL COATING METHODS VS AUM TITANIUM NANO COATING COMPARISON

Coating Methods		 <p>Traditional Coating Process (Electroplating / Anodizing / PVD or Titanium Coating)</p>	 <p>AUM Titanium Nano Coating</p>	 <p>AUM Titanium Beadblast Coating</p>	 <p>AUM Fluid Metal / AUM Arts</p>
Scale	Limited Designs, Shapes & Dimension	Any Complex Designs, Shapes & Dimension	Any Complex Designs, Shapes & Dimension	Any Complex Designs, Shapes & Dimension	
Colors	Limited Selected Colors	Customisation	Customisation	Customisation	
Touch Up	Only allowed 1 to 1 replacement	Allow for touch up	Allow for touch up	Allow for touch up	
Production Lead Time	Longer	Shorter	Shorter	Shorter	
Internal / External	Internal & External	Internal	Internal & External	Internal & External	
Tarnish	✓	✗	✗	✗	
Material:-	Stainless Steel	✓	✓	✓	✓
	Aluminium	✓	✓ (Not advisable)	✓	✓
	Steel	✗	✗	✓	✓
	Wood	✗	✗	✓	✓
	Acrylic	✗	✗	✓	✓
	Glass	✗	✗	✓	✓
	Fibre Glass	✗	✗	✓	✓



COATING SERVICES

AUM TITANIUM COATING

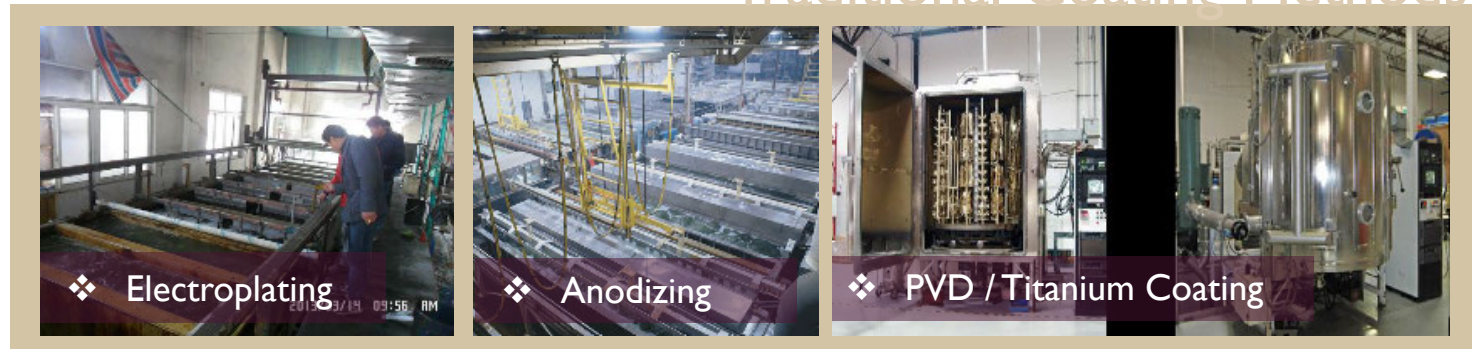
What is

AUM Titanium Coating?

It is NOT POWDER COATING or LACQUER SPRAY paint.

It replicates PVD, Anodizing, Electroplating effects using POST COATING process that USES our special formula that requires it to be oven baked at the high temperature.

Traditional Coating Methods



AUM COATING METHOD



❖ Chemistry / Formulation



❖ Degrease & Preparation Work



❖ High Tech Spray



❖ Oven Bake @
Optimal Temperature



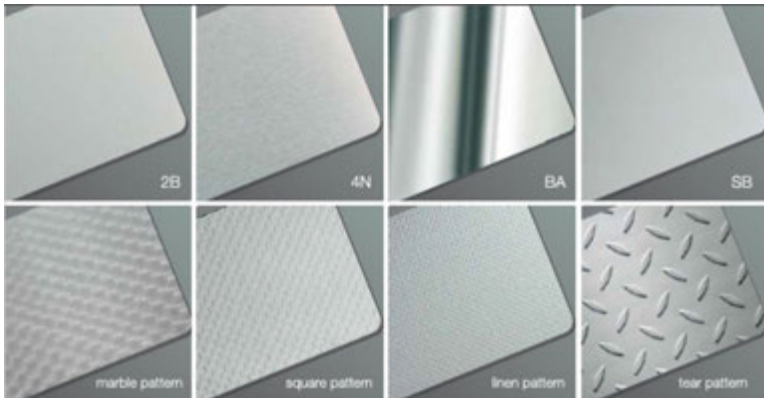
COATING SERVICES

AUM TITANIUM COATING

AUM Titanium

Nano Coating

Titanium Colours Uses a new technique with a film of hard refractory which is approximately 30-50 microns thick. Semi transparent finishes that replicate stainless steel effects.

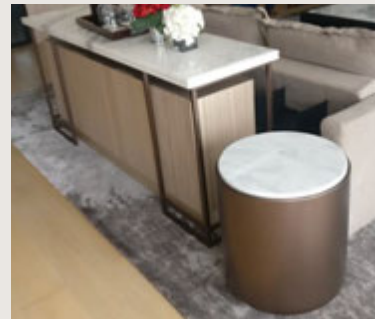
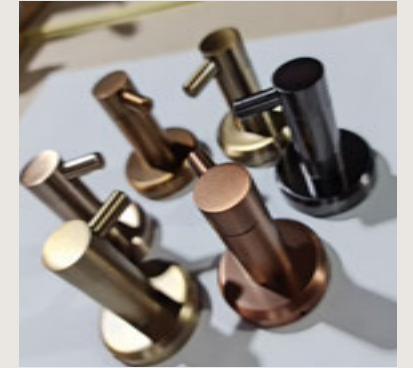


Only on material
Stainless Steel
or pre-finishes
Stainless Steel.

AUM Titanium

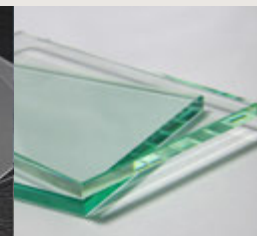
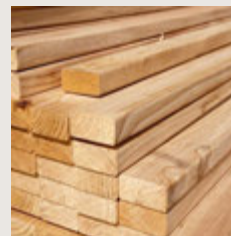
Beadblast Coating

Bead blasting results in a non-directional textured surface with a soft satin reflection and low reflectivity in wide array of colours. It can be fully customized as well.



MATERIALS

which can be coated onto any of the above materials as long as the surface is smooth.





COATING SERVICES

AUM TITANIUM COATING

AUM Titanium

Art Coating

Bespoke finishes to be tailored to your individual needs. Ours skilled craftsmen and designers will produce surfaces and textures for all types of interior and exterior applications.



❖ Art Coating on Laminate

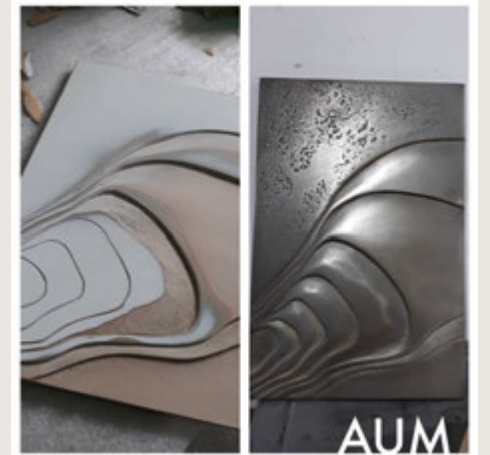
AUM Titanium

Fluid Metal Coating

A cold-spray composite decorative metal coating that allows you to make any substrate look as though it is solid metal, **mixed with real metal (99.9%)** to form a metal veneer.



❖ Metal Art



AUM



AUM TITANIUM | PORTFOLIO / PROJECT REFERENCES

NANO COATING



Bread Talk, S'pore



Din Tai Fung,
S'pore



Toast Box,
S'pore



Paradise Dynasty, S'pore



AUM TITANIUM | PORTFOLIO

NANO COATING



Old Street Bak Kut Teh, S'pore



Showflat Tampines Treasure , S'pore



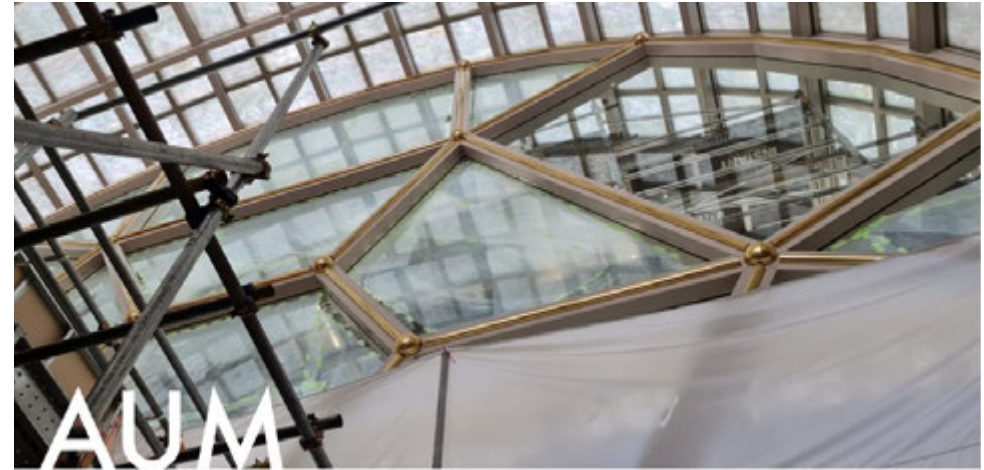


AUM TITANIUM | PORTFOLIO

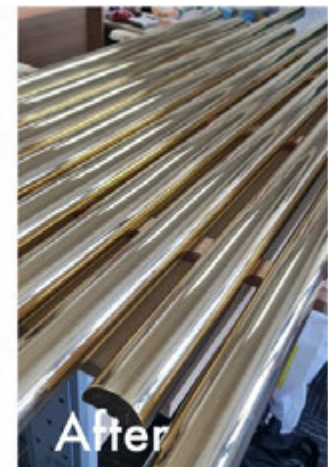
NANO COATING



Sushi Tei Restaurant, Singapore



Before



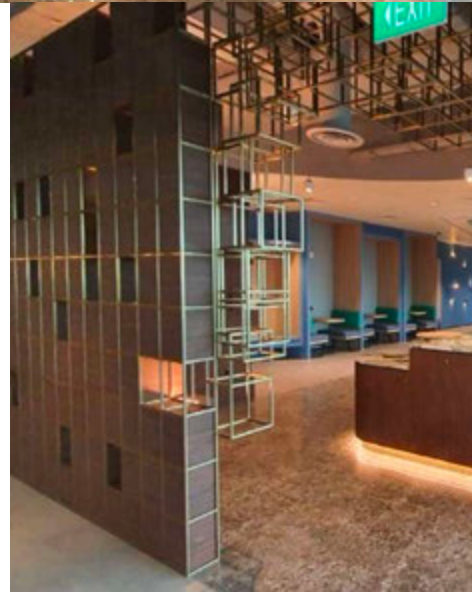
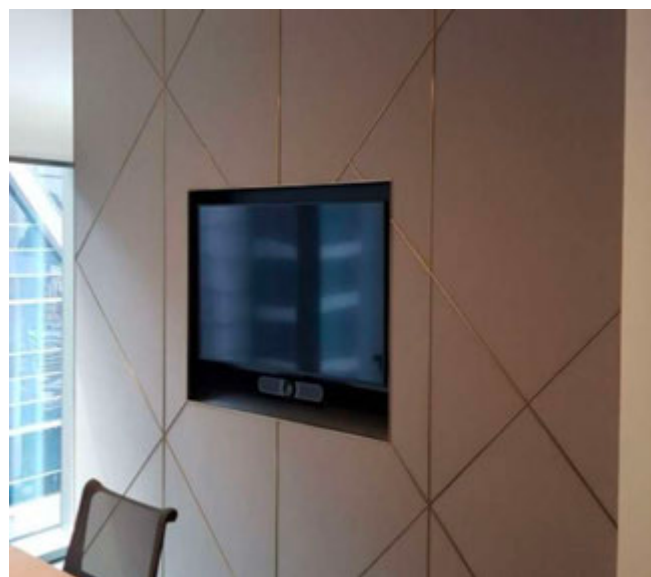
After

Hyatt Hotel, Sabah



AUM TITANIUM | PORTFOLIO / PROJECT REFERENCES

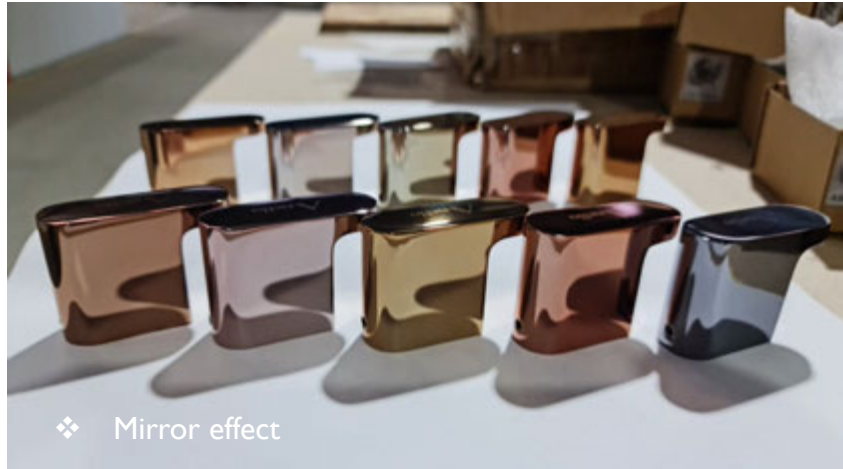
NANO COATING



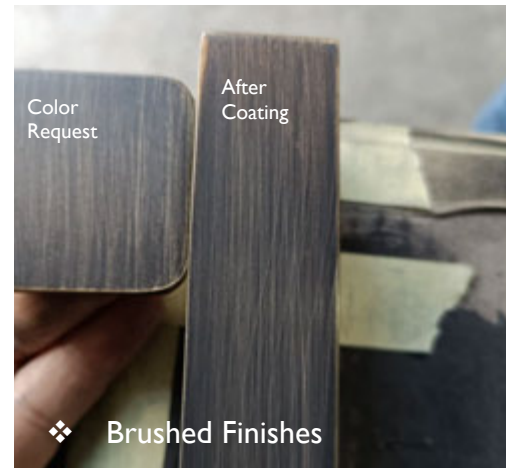
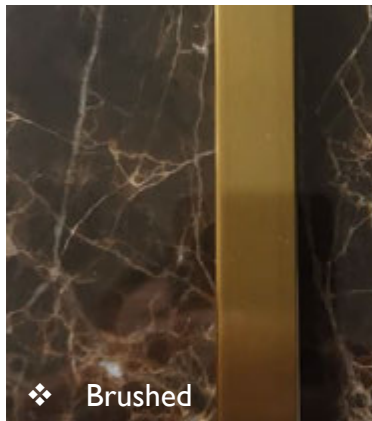


AUM TITANIUM | PORTFOLIO

NANO COATING



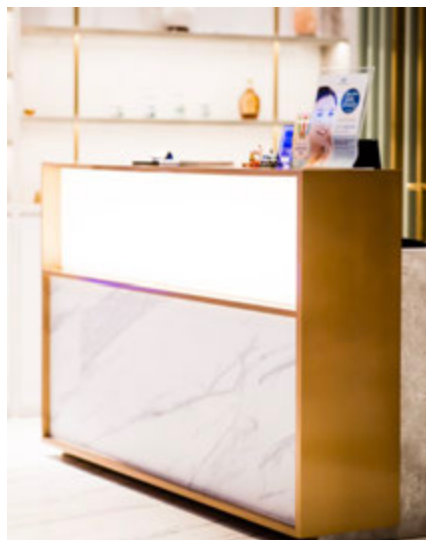
❖ Scratch resistance comparison





AUM TITANIUM | PORTFOLIO

BEADBLAST COATING



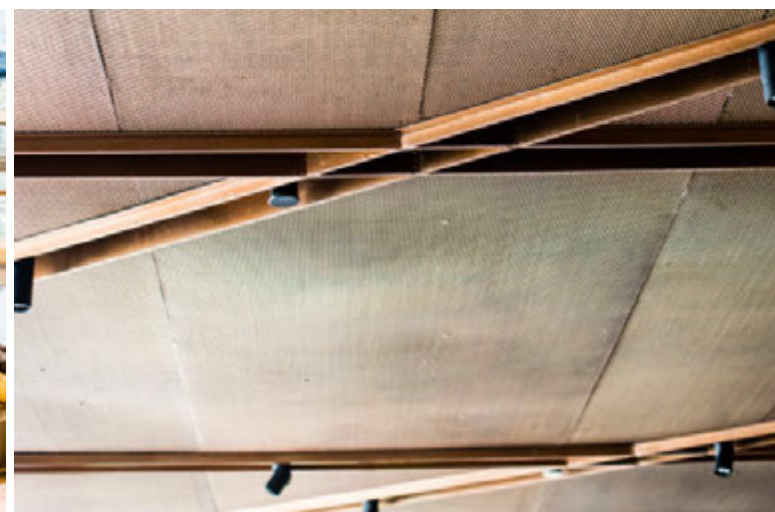
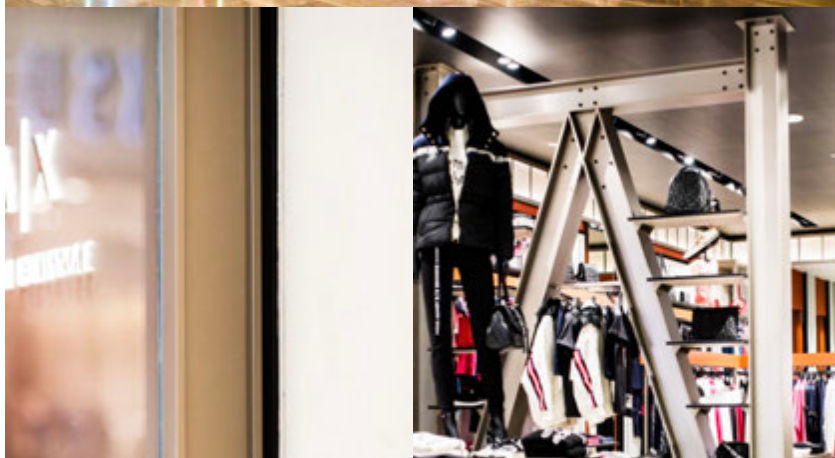


AUM TITANIUM | PORTFOLIO

BEADBLAST COATING



A/X Armani Exchange, S'pore





AUM TITANIUM | PORTFOLIO

BEADBLAST COATING



Changi Airport @ T1 & T2, S'pore

Penthouse at Capitol Piazza , S'pore



AUM TITANIUM | PORTFOLIO

BEADBLAST COATING



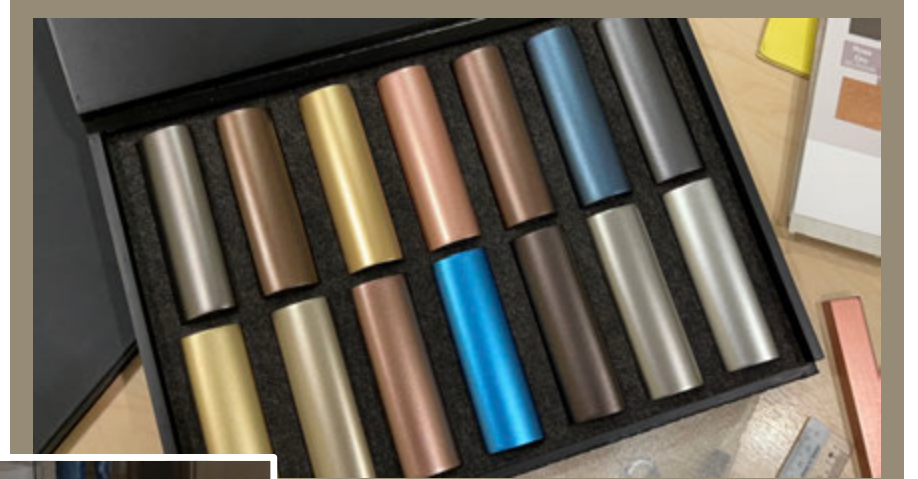
BCA Academy, S'pore



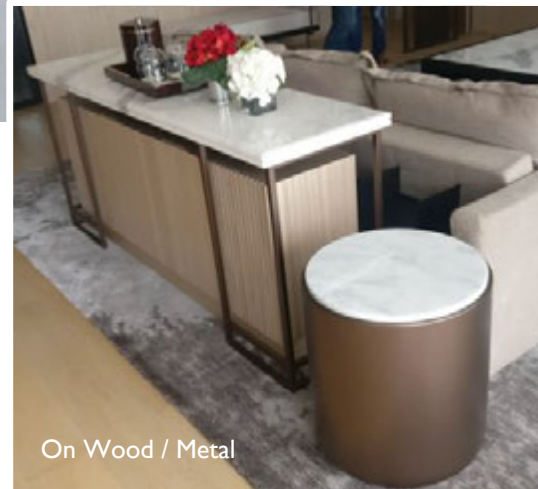
Coating on Fittings



Coating on Wood



AUM Your Colours Specialist



On Wood / Metal

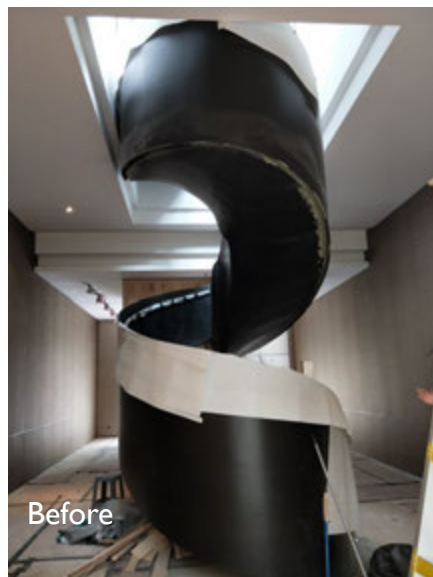


Boarder Frame



AUM TITANIUM | PORTFOLIO

BEADBLAST COATING



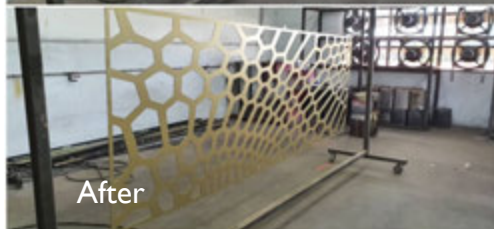
Before



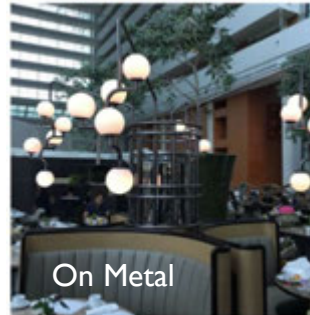
After



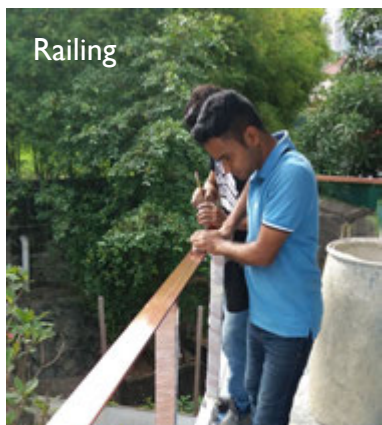
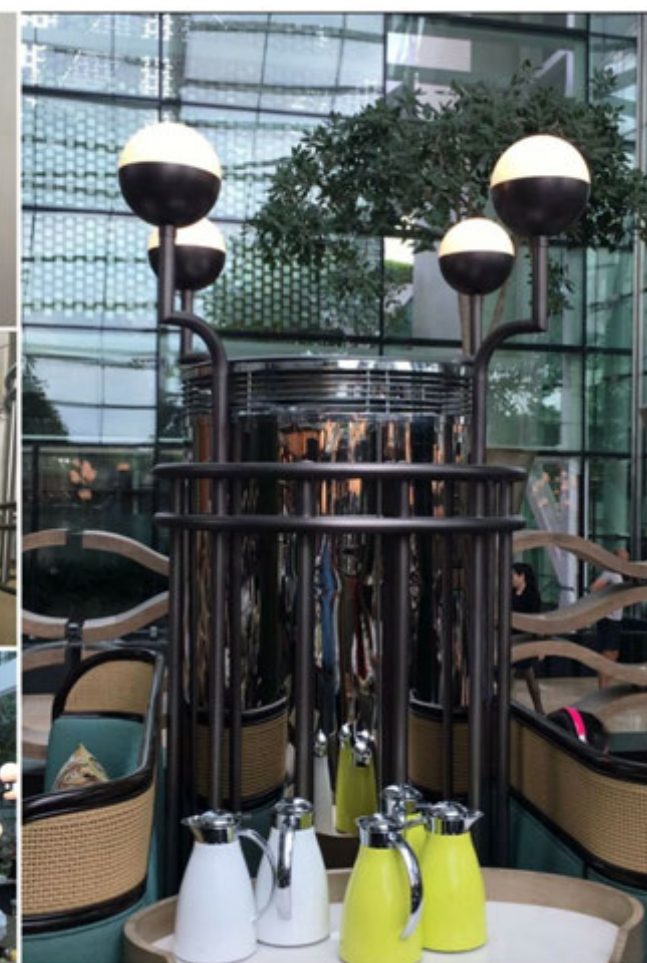
Before



After



On Metal



Railing



❖ Safe

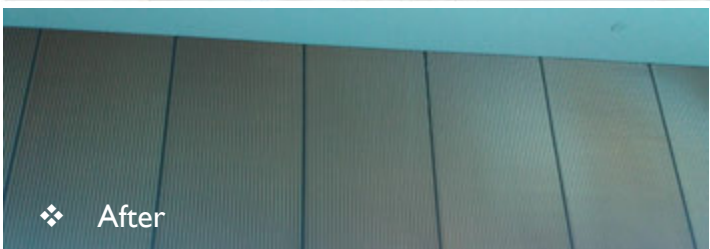
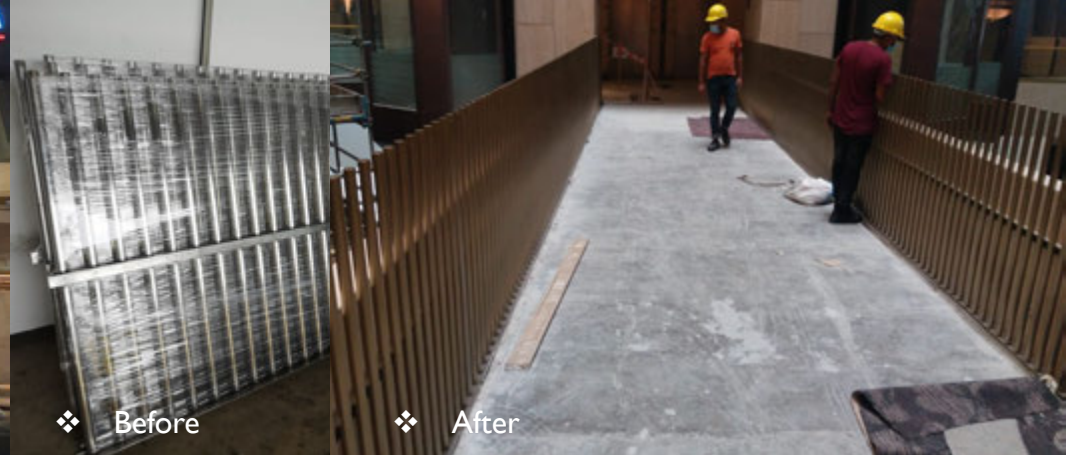
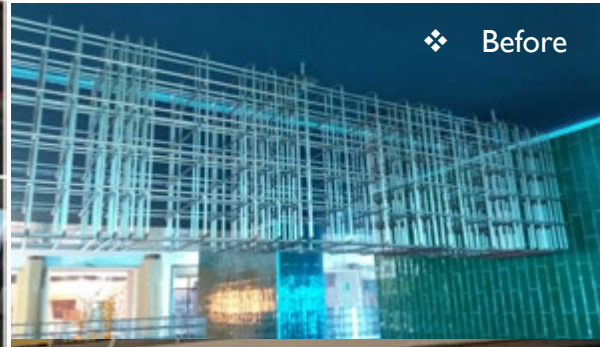
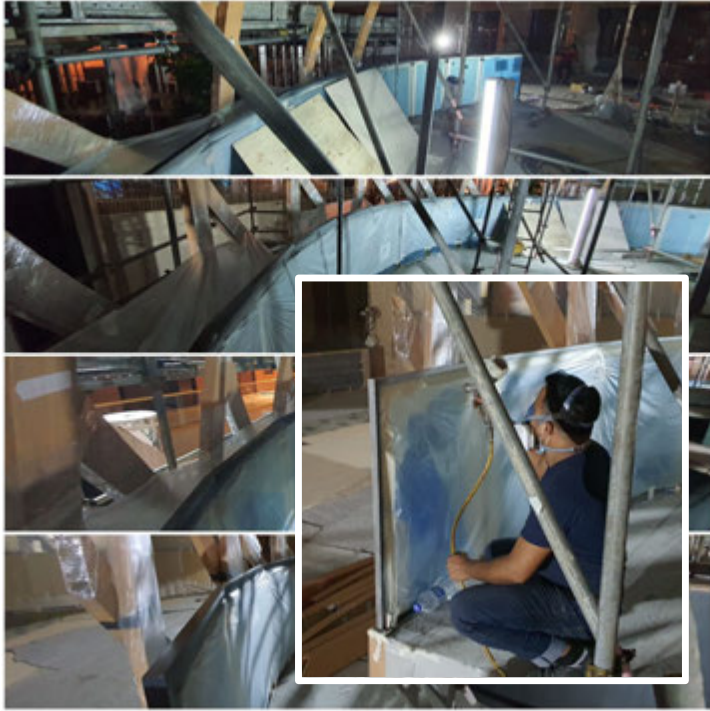


Coating on Lift Door



AUM TITANIUM | PORTFOLIO

BEADBLAST COATING



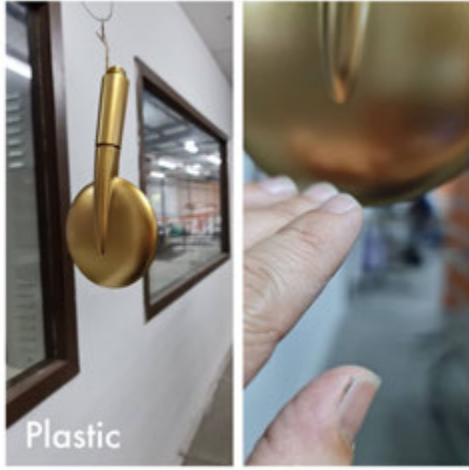


AUM TITANIUM | PORTFOLIO

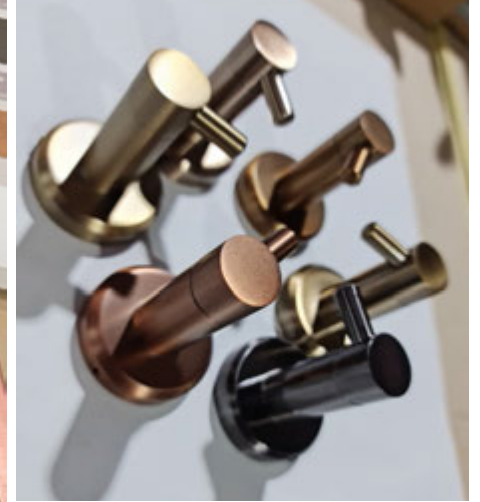
BEADBLAST COATING



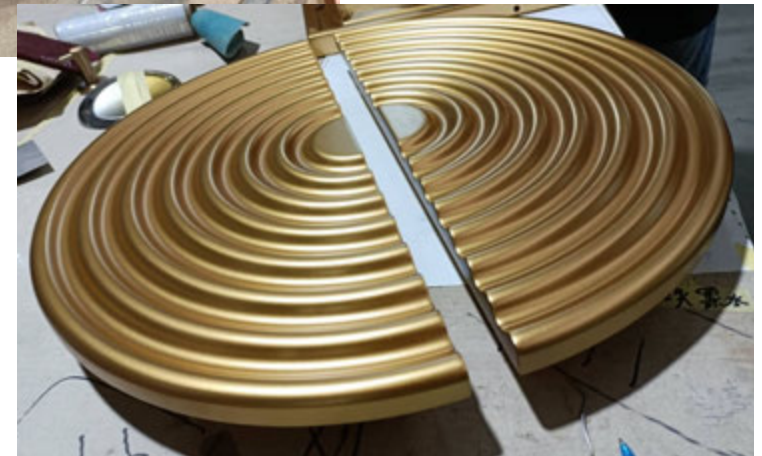
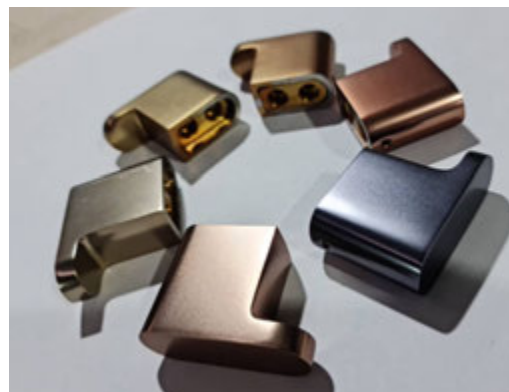
**Client rejected Powder Coated
Chairs made from China.*



Plastic



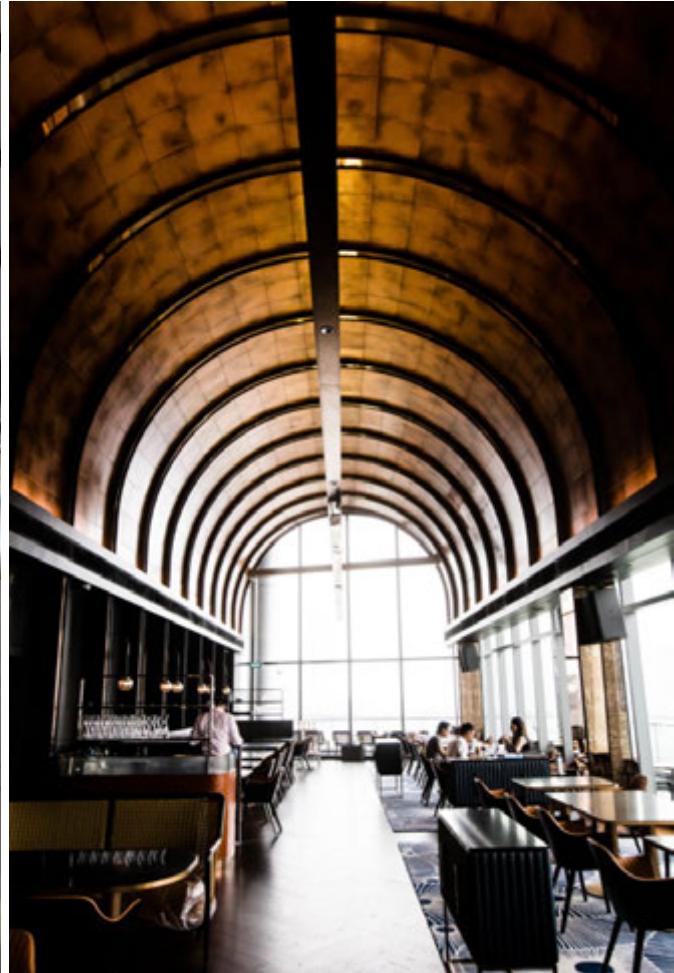
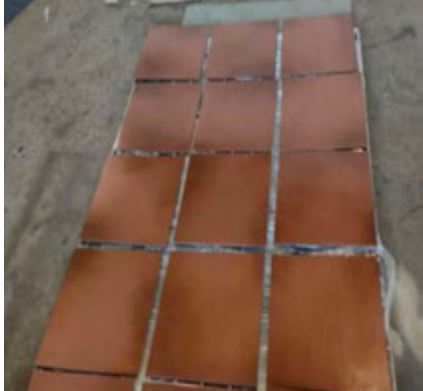
Recoated AUM Titanium
Beadblast for all Chairs





AUM TITANIUM | PORTFOLIO / PROJECT REFERENCES

ARTS / FLUID METAL COATING



The Vue Restaurant, S'pore



AUM TITANIUM | PORTFOLIO / PROJECT REFERENCES

ARTS / FLUID METAL COATING

Sunday, November 24, 2019 | The Sunday Times

Food

Pubs cheer new outlets

Home-grown watering holes Harry's and Brewwerkz up the ante with new flagship outlets



Anjali Raguraman

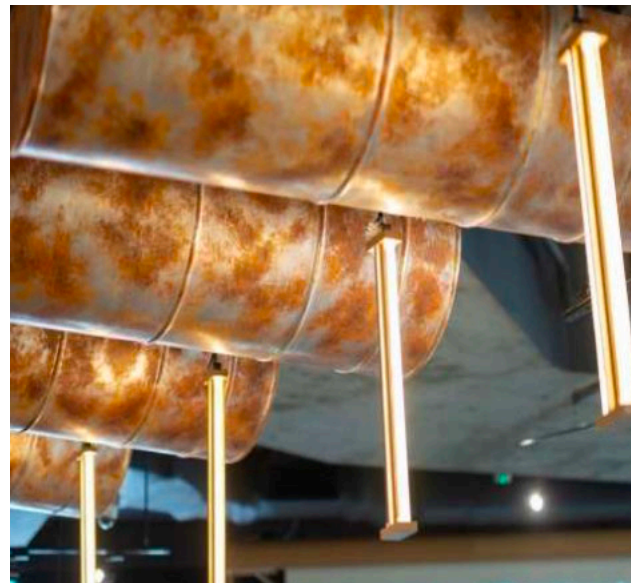
Over the years, many a watering hole has become a casualty of the fickle nightlife scene here. But two home-grown names - Harry's and Brewwerkz - have stood the test of time, with each clocking over 20 years in the business. But neither brand is resting on its laurels - both have pumped around a million dollars each into new flagship outlets. The Sunday Times finds out how they are growing a new generation of drinkers.

anjalir@sg.com.sg

HARRY'S INTERNATIONAL



table and arcade machines, alongside Harry's staple of television screens showing live sports. On the stage, live music is performed by two home-grown bands, O.K. Ready! and Energy, on Thursday, Friday and Saturday nights. Energy is fronted by singer Douglas O'Brien, a veteran of the live music scene here. Harry's International started out as a jazz bar in Boat Quay in 1992, which still stands today, and expanded to become one of Singapore's largest bar and dining venues. "There's been a shift in the market for both food and drinks and to reach out to the masses further, we felt we needed to come up with something loud and new." Harry's outlets in Singapore see about 70,000 people pass through their doors every month, or just under a million people annually. "Having the next generation come through - maybe not in all, but some of our Harry outlets - is critical for the brand to move forward," says Mo Thirugaran.



Harry's Pub at Resort World Sentosa, S'pore
Liquid Metal Copper Effect

Private House at Nim Road, S'pore
MDF Board Liquid Metal Effect



AUM TITANIUM | PORTFOLIO

ARTS / FLUID METAL COATING



❖ Rusted effect



❖ Metal effect



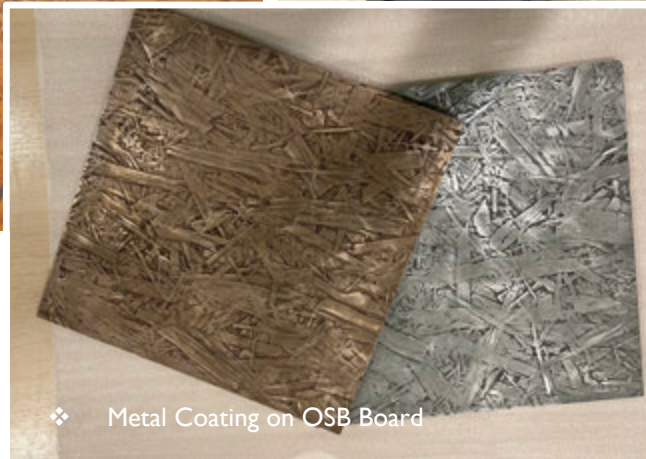
❖ Before



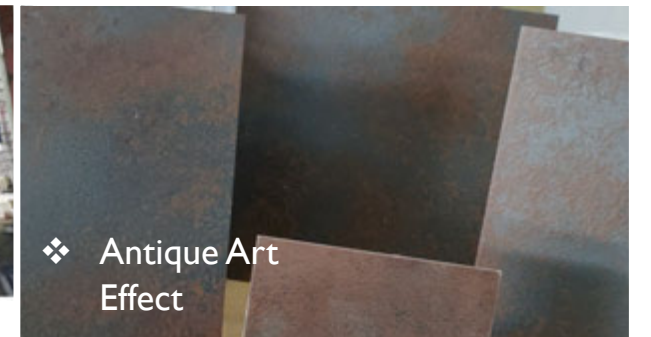
❖ After



❖ Coating on Laminate



❖ Metal Coating on OSB Board

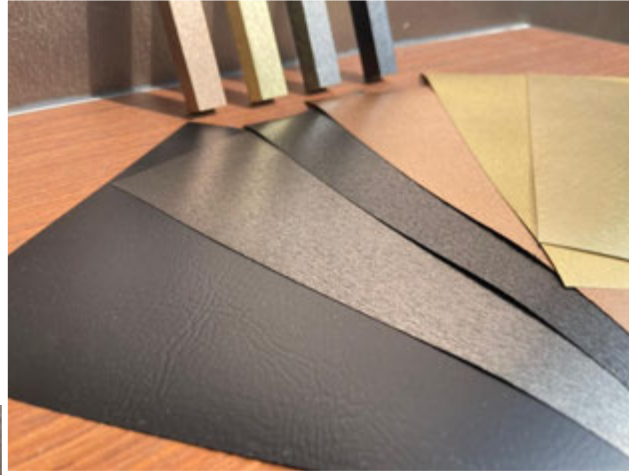


❖ Antique Art Effect

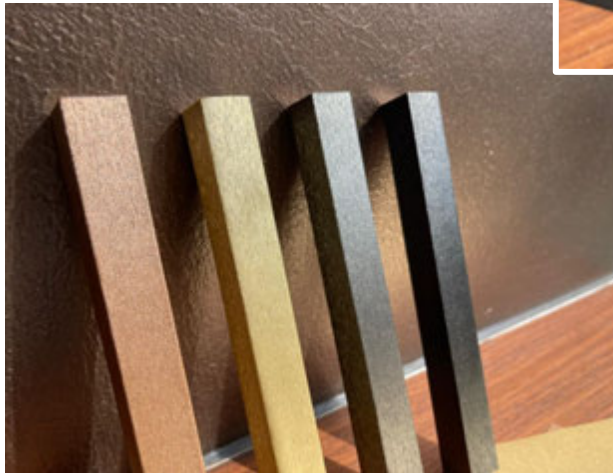


COATING SERVICES | PORTFOLIO

AUM ART / FLUID METAL COATING



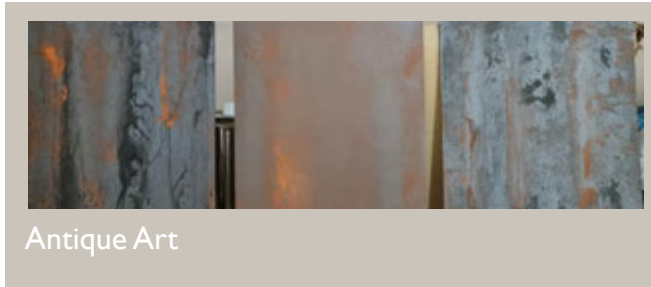
Rusted c/w hairline effect



❖ AUM Art Coating on laminate



Metal Art



Antique Art

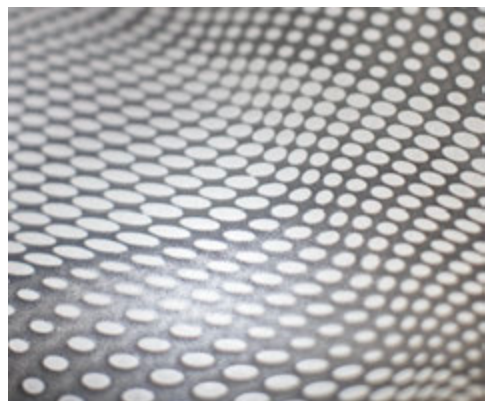


Sculpture



AUM TITANIUM | PORTFOLIO / PROJECT REFERENCES

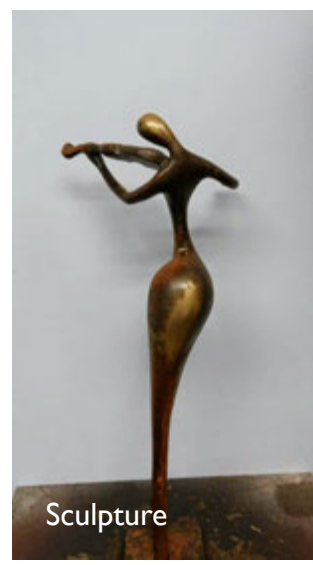
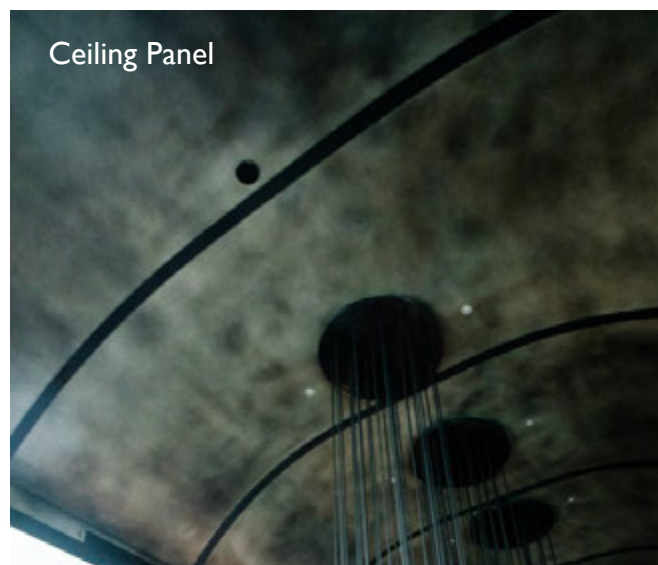
ARTS / FLUID METAL COATING



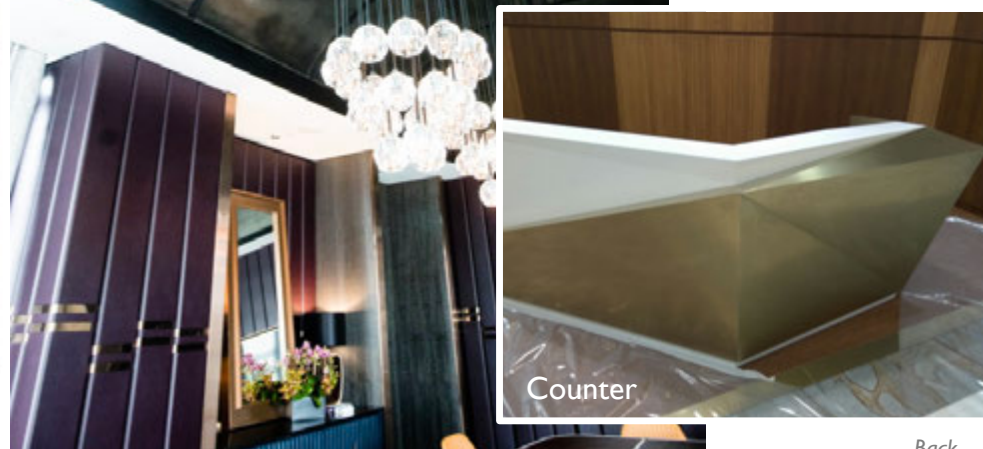
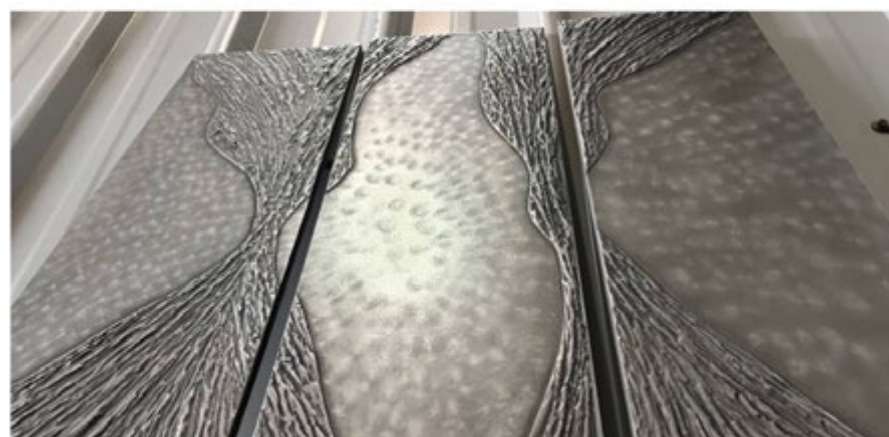
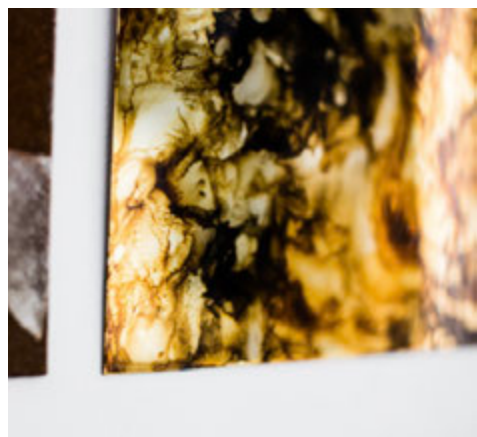
Ceiling Panel



Ceiling Panel



Sculpture

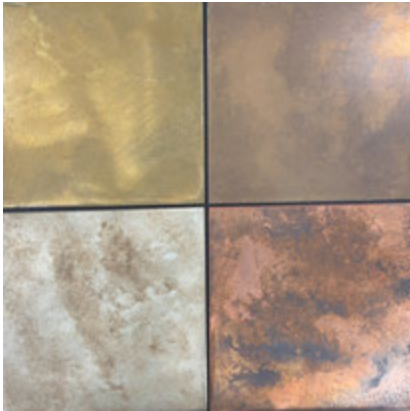


Counter



AUM TITANIUM | PORTFOLIO / PROJECT REFERENCES

ARTS / FLUID METAL COATING



❖ AUM Art Coating on laminate



AUM TITANIUM | PORTFOLIO / PROJECT REFERENCES

BaWangChaji @Solaris Mont Kiara

Before Coating



AUM Titanium Beadblast
Coating c/w AUM Fluid Metal
Coating

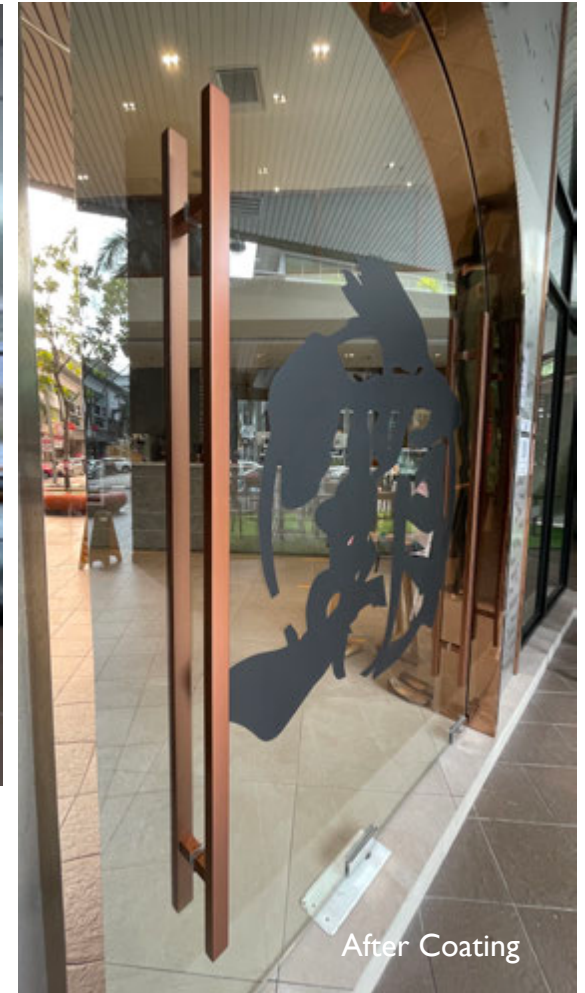
After Coating



Before Coating



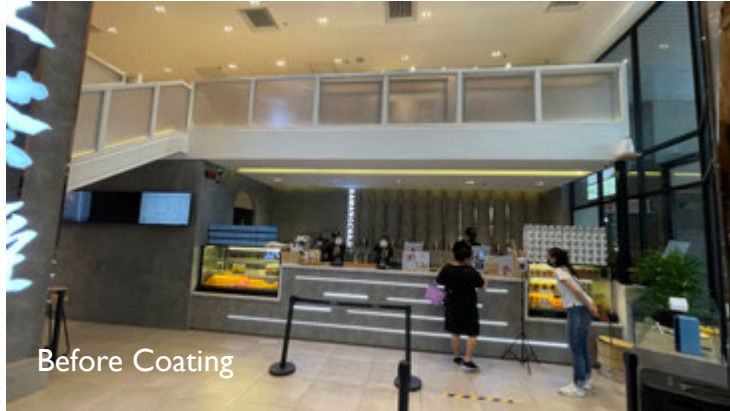
After Coating





AUM TITANIUM | PORTFOLIO / PROJECT REFERENCES

BaWangChaji @Solaris Mont Kiara



Before Coating

AUM Titanium Beadblast
Coating c/w AUM Fluid
Metal Coating



After Coating



AUM TITANIUM | PORTFOLIO / PROJECT REFERENCES

BaWangChaji @Solaris Mont Kiara



Before Coating

AUM Titanium Beadblast Coating c/w AUM Fluid Metal Coating



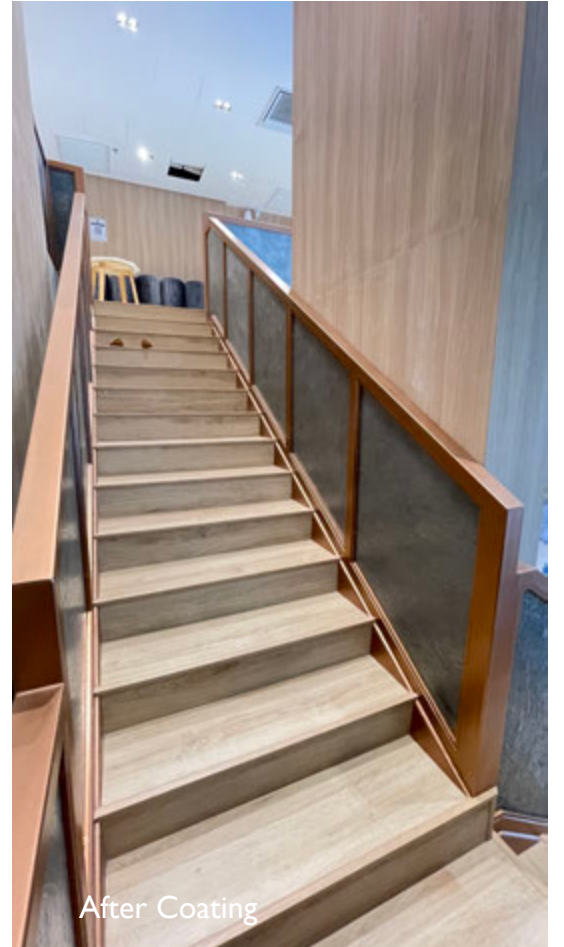
After Coating



After Coating



After Coating



After Coating

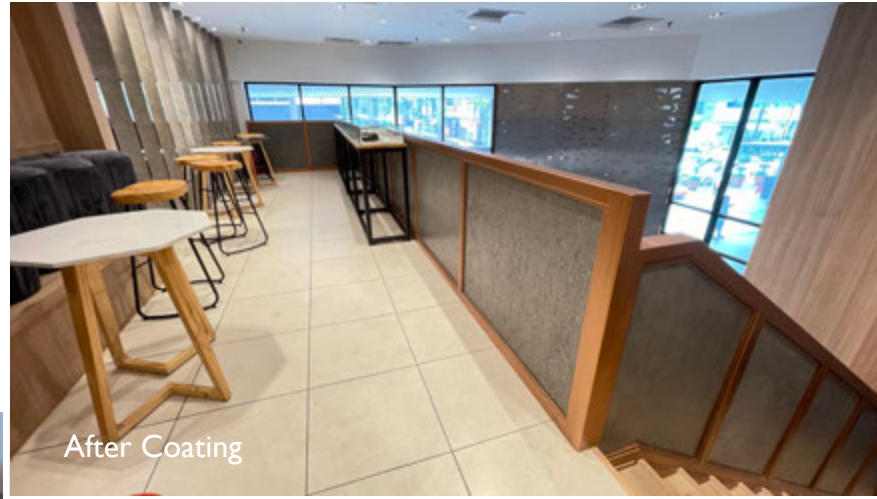


AUM TITANIUM | PORTFOLIO / PROJECT REFERENCES

BaWangChaji @Solaris Mont Kiara



Before Coating



After Coating

AUM Titanium Beadblast
Coating c/w AUM Fluid Metal
Coating



After Coating



After Coating

Thank You!